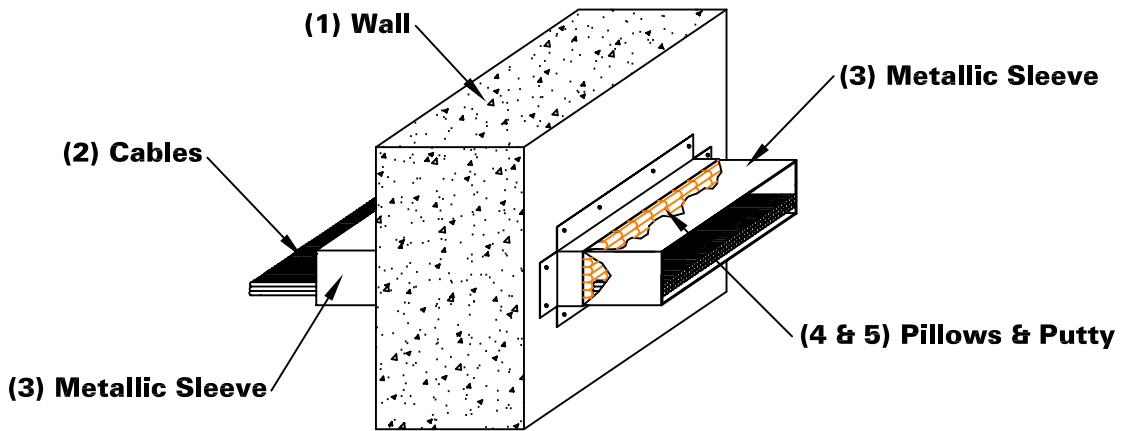


# CONCRETE WALL CABLES

**F Rating 2 Hr.**

**T Rating 1 Hr.**



**1. WALL ASSEMBLY** - Min. 6" (152mm) thick reinforced lightweight or normal weight (100-150 pcf) (1602-2404 kg/cm) concrete. Wall may also be constructed of any UL Classified Concrete Blocks. Max. area of opening is 83-1/4 sq. in. (537 sq. cm) with max. dimensions of 18-1/2" (470mm).

**2. CABLE** - Max. 26% cable fill of opening in any combination of:  
 (A) max. 350 kcmil power cable w/PVC insulation  
 (B) max. 7C #12 awg control cable w/PVC insulation jacket  
 (C) max. 100pr. #24 awg communications cable w/PVC insulation and jacket.

**3. METALLIC SLEEVE** - Metallic sleeve consists of a rectangular shaped sleeve and a cover plate fabricated from 14MSG (0.072 in.) thick galv. steel. The rectangular shaped sleeve consists of a cover 18" (457mm) wide by 4" (102mm) high by 20" (508mm) long sleeve with a 2-3/4" (70mm) wide mounting plate. The cover plate consists of a 2-3/4" (70mm) wide leg and 1-1/2" (38mm) high flange. The rectangular shaped sleeve to be inserted into the opening from either side of wall. Cover plate to be surface mounted on opposite side of wall. Both rectangular shaped sleeve and cover plate secured to wall by means of 1/4" (6mm) diameter 1-1/4" (32mm) long steel screws in conjunction with 1/4" (6mm) by 1-1/4" (32mm) diameter steel fender washers installed in pre-drilled holes spaced 7-1/2" (191mm) OC along the mounting plate and cover plate.

P-W SOUTHERN INC. - Type P-W  
 COOPER B-LINE INC - Wall Penetration Sleeve

**4. NELSON PLW PILLOWS** (part # AA478 or AA479) - Tightly pack pillows into opening to fill annular space between cables and periphery of opening. Install pillows flat and centered within the wall.

**5. NELSON FSP PUTTY** (part # AA445) - (not shown) After installation of the pillows, putty shall be applied to seal any voids between the cables and the pillows and the metallic sleeve on both sides of wall assembly.

Tested in accordance with:

ASTM E-814  
 ANSI/UL 1479



**System No.  
W-J-3100**

**Nelson Firestop**

**DWG NO. FS-0491R2**

**DATE: 07/20/06**

**BY: RL**

**Project Name:** \_\_\_\_\_  
**Address:** \_\_\_\_\_  
 \_\_\_\_\_  
**Installer:** \_\_\_\_\_  
**Address:** \_\_\_\_\_  
 \_\_\_\_\_  
**Signature:** \_\_\_\_\_

**Nelson Firestop**  
 800 331-7325 Fax: 918 627-2941  
 Tulsa, Ok.